



2021 ESC Guidelines for Acute and Chronic Heart Failure

Definition of Heart Failure (HF)

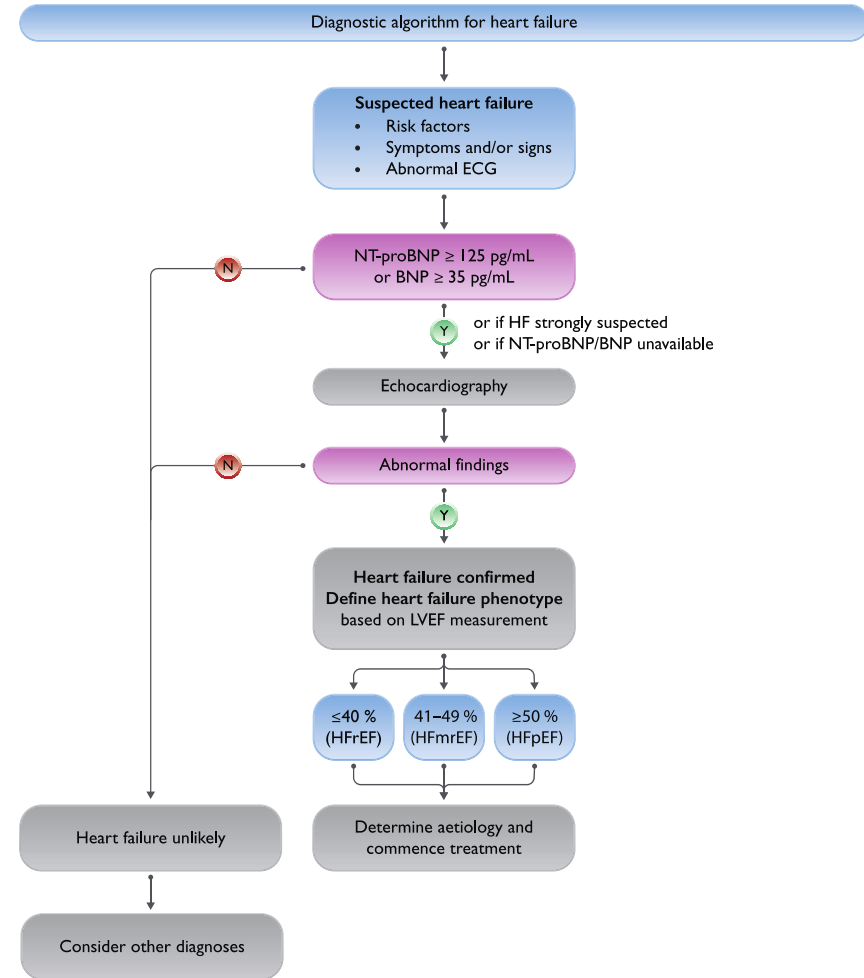
Type of HF		HFrEF	HFmrEF	HFpEF
CRITERIA	1	Symptoms ± Signs ^a	Symptoms ± Signs ^a	Symptoms ± Signs ^a
	2	LVEF ≤40%	LVEF 41 – 49% ^b	LVEF ≥50%
	3	–	–	Objective evidence of cardiac structural and/or functional abnormalities consistent with the presence of LV diastolic dysfunction/raised LV filling pressures, including raised natriuretic peptides ^c

^b
For the diagnosis of HFmrEF, the presence of other evidence of structural heart disease (e.g. increased left atrial size, LV hypertrophy or echocardiographic measures of impaired LV filling) makes the diagnosis more likely.

^c
For the diagnosis of HFpEF, the greater the number of abnormalities present, the higher the likelihood of HFpEF.

Diagnosis of HF

Recommendations	Class ^a	Level ^b
BNP/NT-proBNP ^c	I	B
12-lead ECG	I	C
Transthoracic echocardiography	I	C
Chest radiography (X-ray)	I	C
Routine blood tests for comorbidities, including full blood count, urea and electrolytes, thyroid function, fasting glucose and HbA1c, lipids, iron status (TSAT and ferritin)	I	C



HF and Diabetes

2021

2016

Recommendations for management of patients with HF and diabetes

SGLT2 inhibitors (canagliflozin, dapagliflozin, empagliflozin, ertugliflozin, sotagliflozin) are recommended in patients with T2DM at risk of CV events to reduce hospitalizations for HF, major CV events, end-stage renal dysfunction, and CV death.

I

Empagliflozin should be considered in patients with T2DM in order to prevent or delay the onset of HF and prolong life.

IIa

© ESC 2021

Recommendation	Class ^a	Level ^b
SGLT2 inhibitors (canagliflozin, dapagliflozin, empagliflozin, ertugliflozin, sotagliflozin) are recommended in patients with T2DM at risk of CV events to reduce hospitalizations for HF, major CV events, end-stage renal dysfunction, and CV death. 293–297	I	A
SGLT2 inhibitors (dapagliflozin, empagliflozin, and sotagliflozin) are recommended in patients with T2DM and HFrEF to reduce hospitalizations for HF and CV death. 108,109,136	I	A